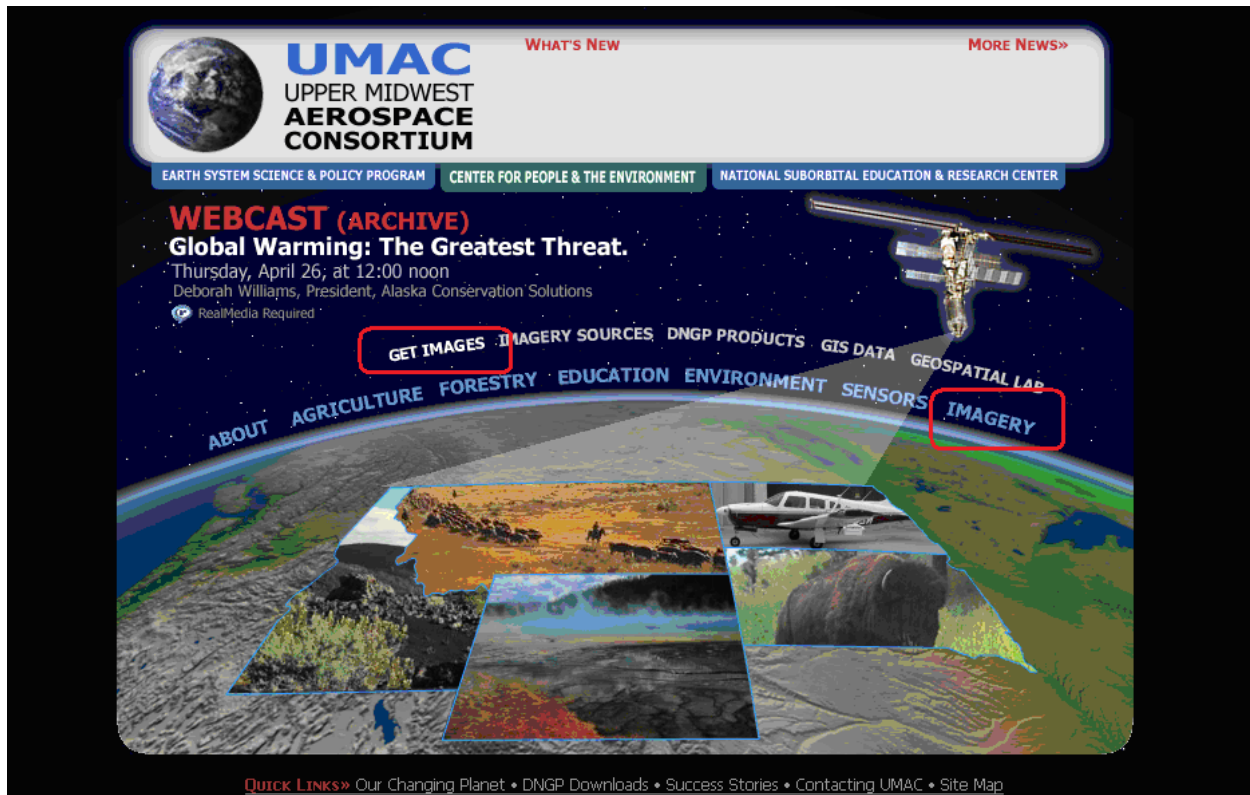




Downloading UMAC Imagery

Free imagery is available for most of Minnesota, North Dakota, South Dakota, and Eastern Montana. These instructions will help to save you some time and allow you to get all the images you may be looking for.

1. Go to <http://www.umac.org>
2. Click on “IMAGERY”
3. Select “GET IMAGES”



4. Your first time to the Download site, select the “DNGP Registration” (visible on the next page). You will only have to do this once. Continue to step #6
5. Registration, fill in required items and select “Register” button.

Register

First Name*

Last Name*

Street Address

City

State

Zip

Phone

EMail

Username*

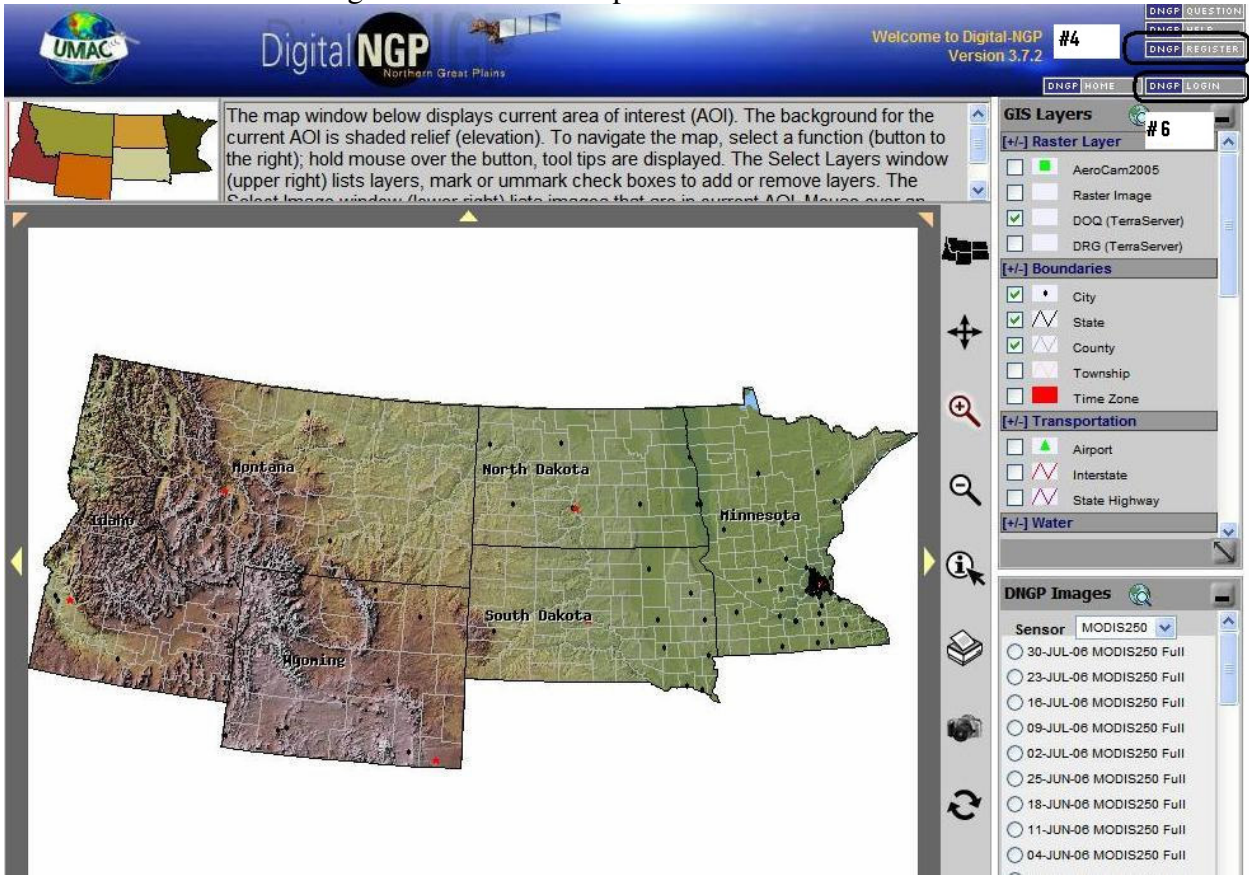
Password*


Confirm Password*

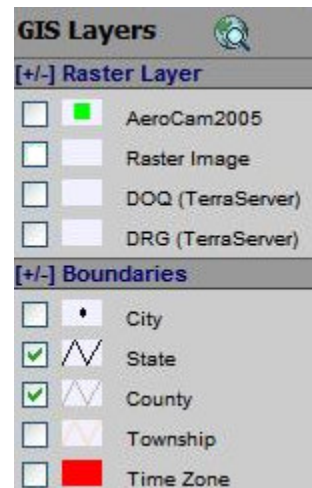
Secret Question*


Secret Answer*



6. Next select “NDGP Login”. Continue to step #9.




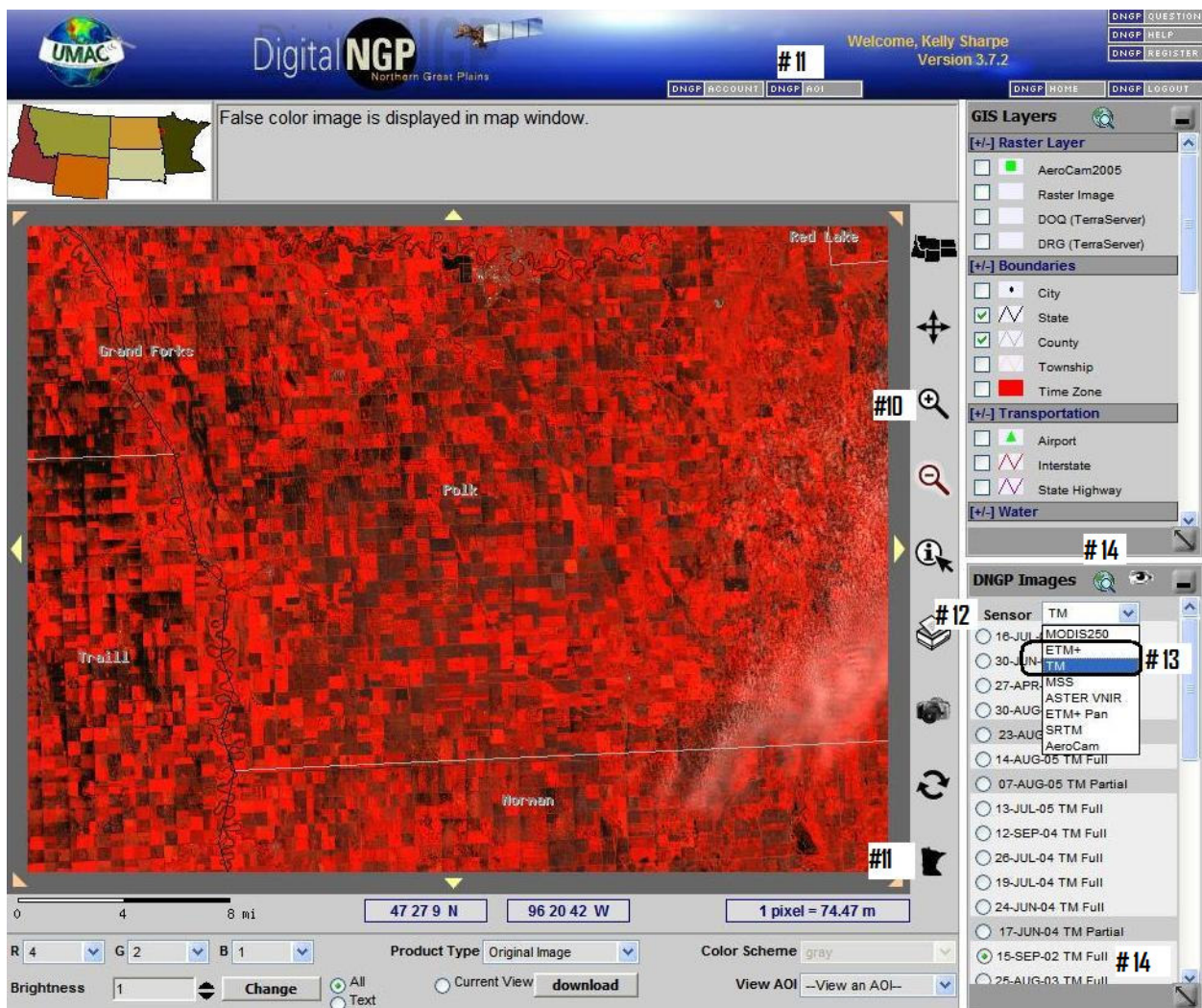
7. Once logged in it will help to maintain your computers speed while doing downloads and viewing maps to shut off all “GIS Layers” but your “State” and “County”, these 2 should be “Checked”. To activate layers, that you have “Checked” and “Unchecked” click on the  button to the right of the “GIS Layers”.



8. Use the  tool on the right side of the map window to zoom to the area where all your fields are, this is referred to as “Area Of Interest” (AOI). You can zoom in by either clicking over the center of the area you want to zoom to or by dragging a window over the area you want to look at.

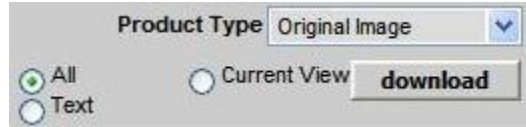
9. Once zoomed into your “AOI” it is recommended that you select the  Tool on the right side of the map window. This will allow you to name and save your area of the map for future reference. Next time you return, you can select this “AOI” by using the  button at the top of the map window.

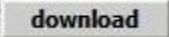
10. You are now at the area you want to download images for. Go to the lower right side of the map window and you will find a title bar that says “DNGP Images” and directly below that you will see “Sensor” dropdown box. The box should something like this **Sensor** MODIS250 . Click on the drop down arrow and you will get a list of different Image Types to view and download.
11. You will want to select either the “ETM+” or “TM” for the file types to download. These are Landsat images that contain NDVI bands need for Satellite imagery. (“TM” usually has the most images)
12. Once you have selected the file type, you will see a long list of names like this, 12-SEP-04 TM Full in the window below. Find the Image Date you are looking for and click in the circle to the left 15-SEP-02 TM Full . Once you have the date looking like this you must select the “View Selected Image” button  this is at the top of the “DNGP Images” window you selected images in.

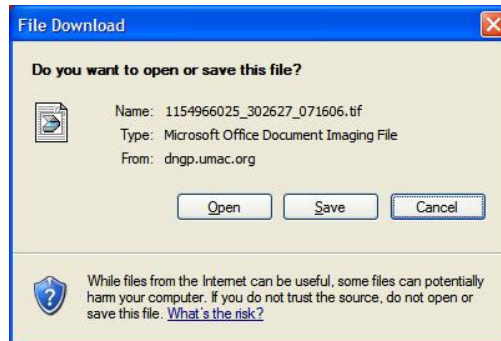


13. Once you have selected the image you want, you can download it by going to the area below the map window. Before you download anything make sure you have the “Product Type” set to “Original Image” .

14. Once you have selected the “Original Image” you must select “All” to the left of the “Download” button. This will select all bands for your download so you get a usable image for GK Tech “Ag Data Viewer”. Before you download your settings should look like this.



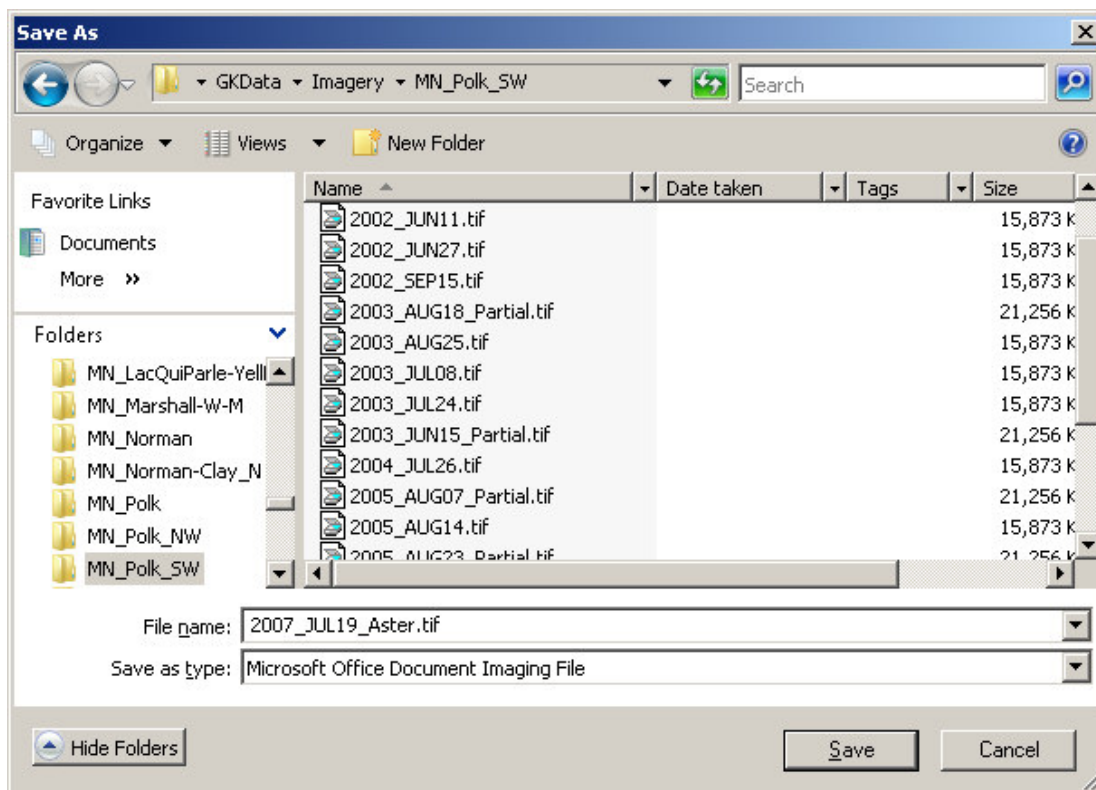
15. Hit the  button and it will open a File Download window. Select “Save” and this will open a Save As window for you to select your location for storing the image.



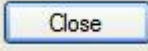

16. In the Save As window, you should be saving this file to your C:\GK Data\Imagery\Location – folder. When naming your file we recommend using this naming format - Year_MonthDay_optional info (auto-naming function in ADV will use the information to the second “underscore”).

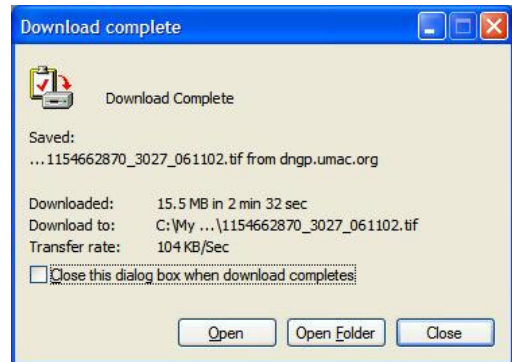
Naming Example - 2007_JUL19_Aster-Clouds

17. Leave the “Save as type” at the default value, and hit the  button.



18. Your file will begin downloading. The download should take a 10 – 20 sec to a couple of min. Depending on you computer / internet speed and the size of the area being downloaded.

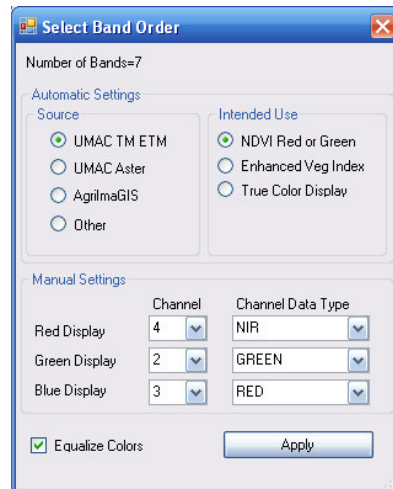
19. Once the “Download complete” window comes up, select  to go back and do more downloads. Or select  to open up the folder the image is in. Each township is roughly 1.0 MB of data.



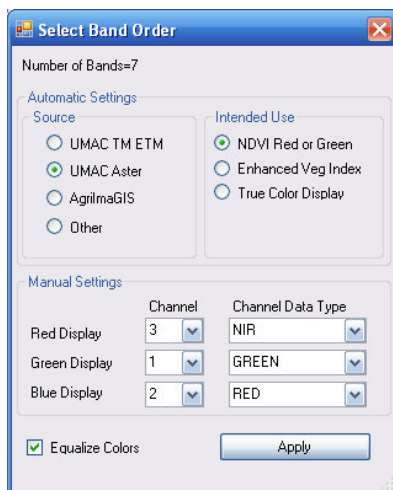
20. Return to step 13 or 14 to download your next image and repeat until you have all the images you are looking for.

21. Once you finish downloading images, open GK Technology – Ag Data Viewer. Open your “County Data” and turn on your “Townships” or “Sections”. Next open your “Imagery” and go through all the images you downloaded to make sure they are in the correct projection. If they are correct, they will show up behind your Townships and Sections. If they are miss-projected, the images will be 100’s of miles off to the right or left of the Townships and Sections.

22. The first time you turn on your images you should have the “Band Order” setting as follows for all UMAC TM and ETM images.



23. For UMAC Aster use the example below.



24. If you download an image that is miss-projected into it is recommended to use View Finder 2.1 to re-project the image. This program is available from UMAC.