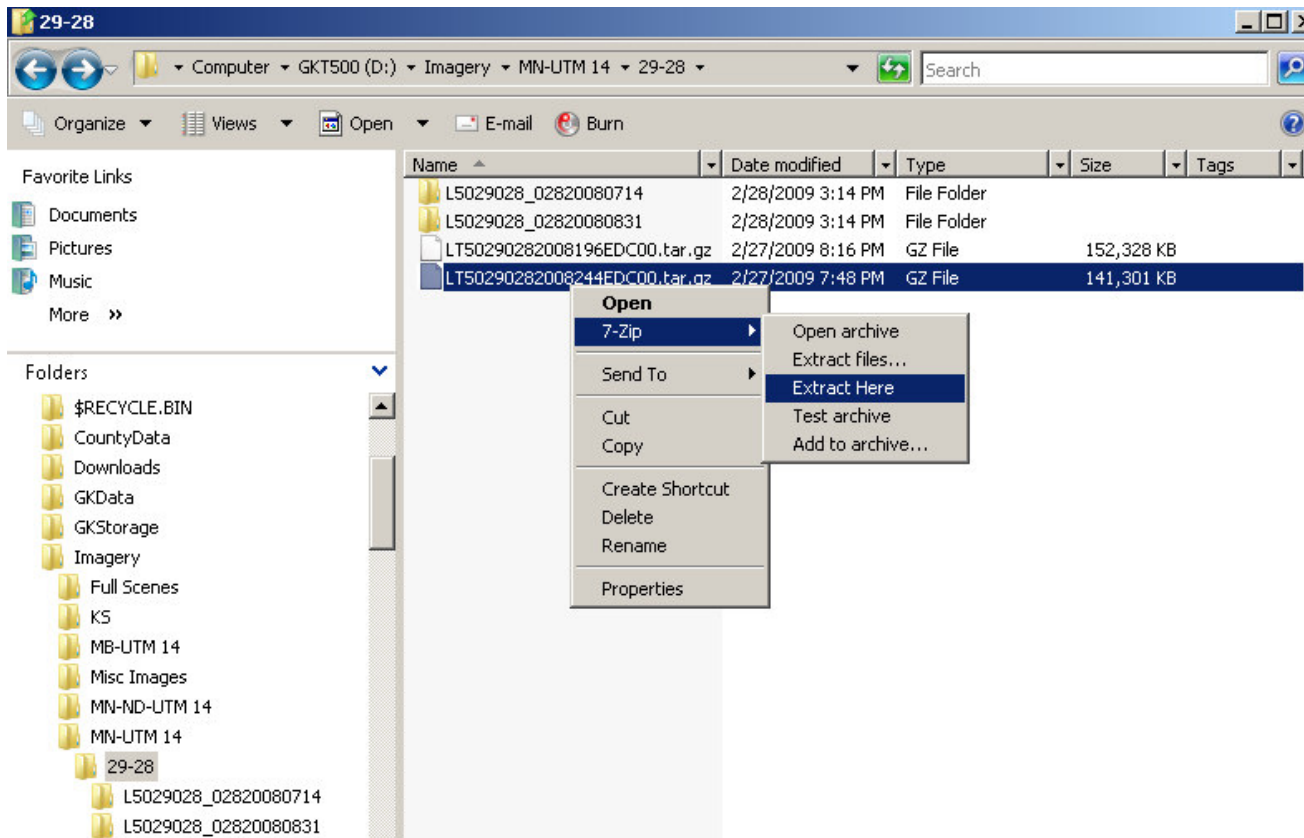


# Processing Imagery USGS

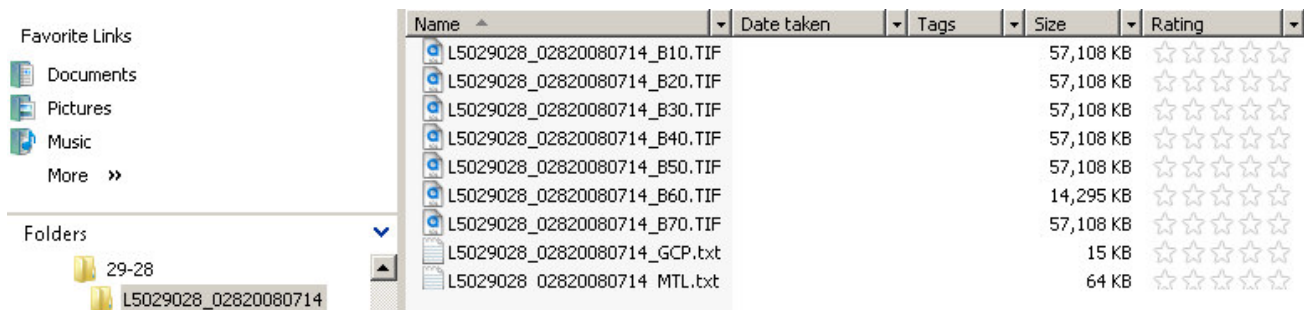
Once images are downloaded from USGS – Earth Explorer, use “Windows file explorer” and open the folder you have all the data in.

Notice the files come in as a .tar.gz (zip format). These files must be unzipped, you will need to use WINZIP, 7-ZIP or some form of a unzipping utility. At this time windows will not unzip them.

Un zip back to the same folder in C:/GKData/Imagery....



Once unzipped, you should have a folder holding data like this.



If Ag Data Viewer is running, shut it down (there can be memory shortage issues). You will re-open next.

# Processing Imagery USGS

Open Ag Data Viewer

Click on "Process"

Select "Merge Landsat TIF's"

Click on the "Load Source Images"

Browse to the folder where Data is saved

Select Bands B20-B50

Click "Open"

Assign Bands as shown below

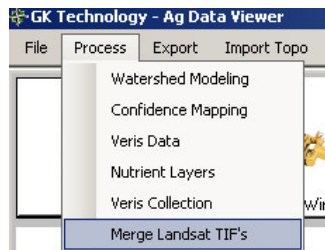
Red = B40

Green = B20

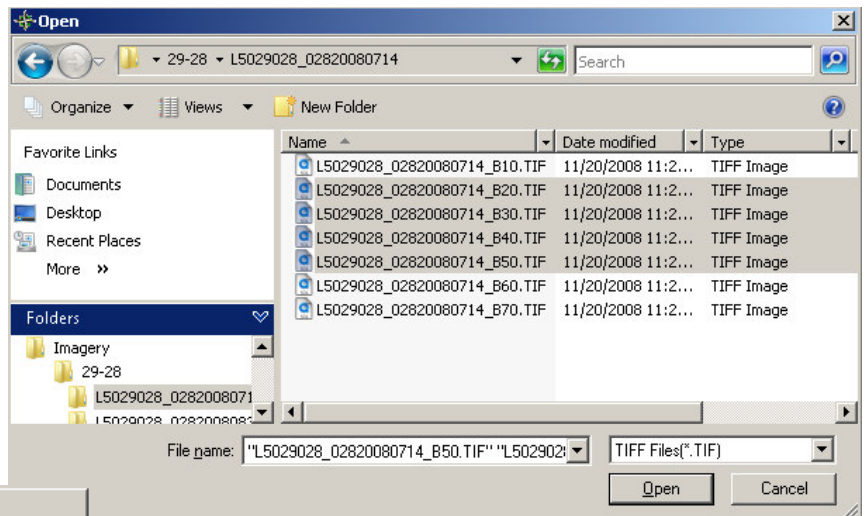
Blue = B30

Alpha = B50

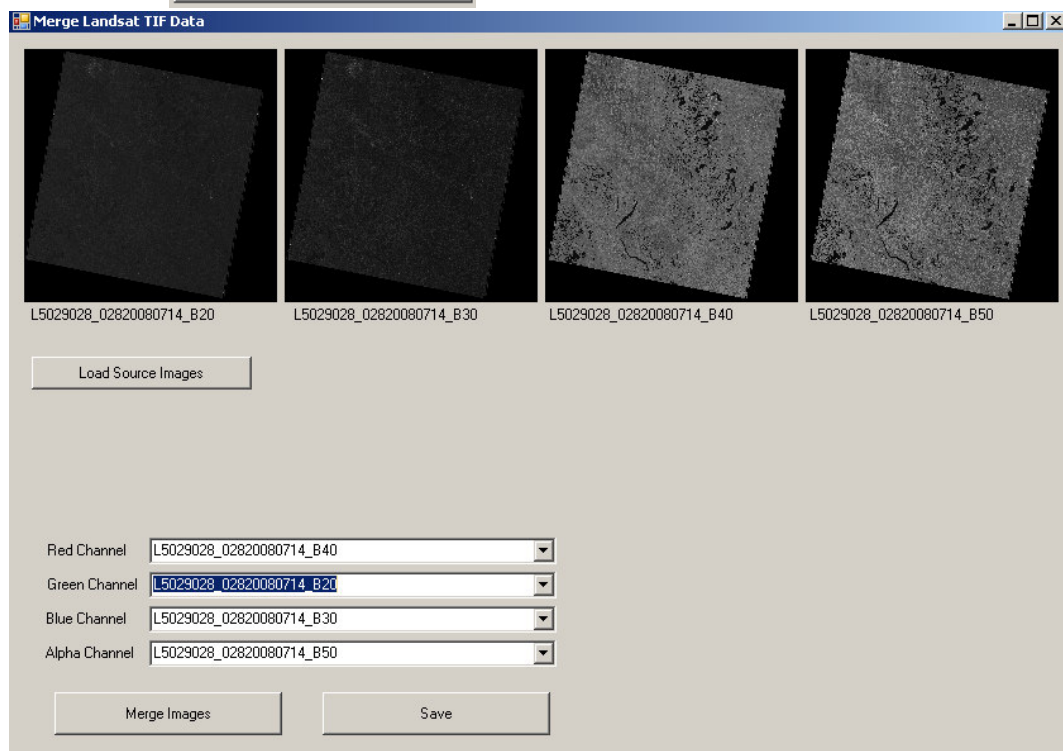
Click "Merge Images"



Load Source Images



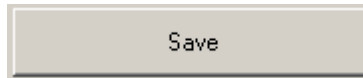
Merge Images



# Processing Imagery USGS

When that finishes running, you should hear a BEEP.

Click on the "Save" button.



Save the image into a different folder (in the example I moved up one level to the 29-28 Folder).

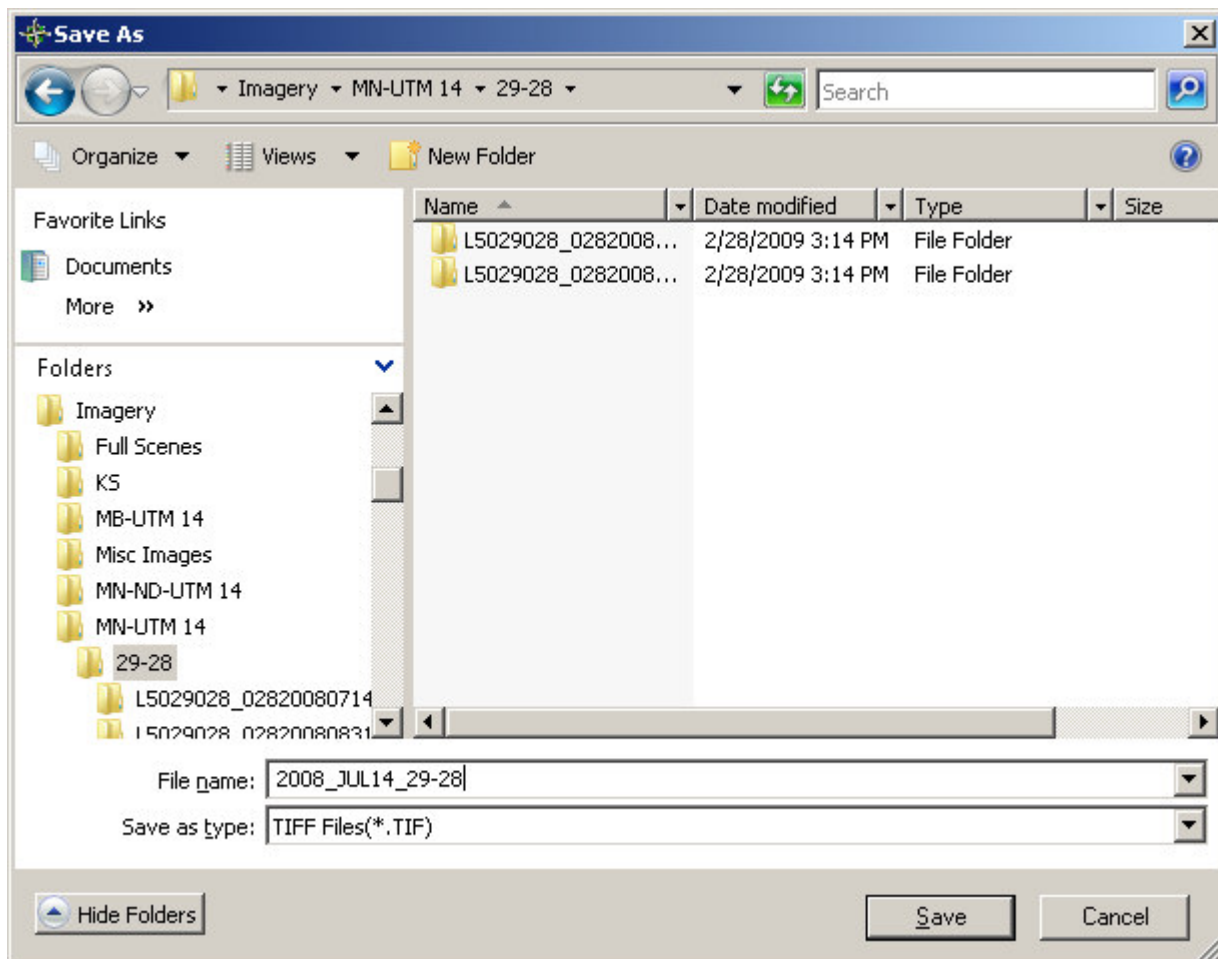
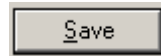
Name the image in the same name format as shown **2008\_JUL14\_29-28-clouds SW**

The \_ (underscore's) are very important!!

Underscore's are used in the auto-naming function when extracting surfaces.

Nothing after the SECOND UNDERSSCORE is used in the auto-naming of surfaces.

Click on the "Save" Button



# Processing Imagery USGS

Close the “Merge Landsat” window

Open the “Map Window

Go to the “Imagery” Tab

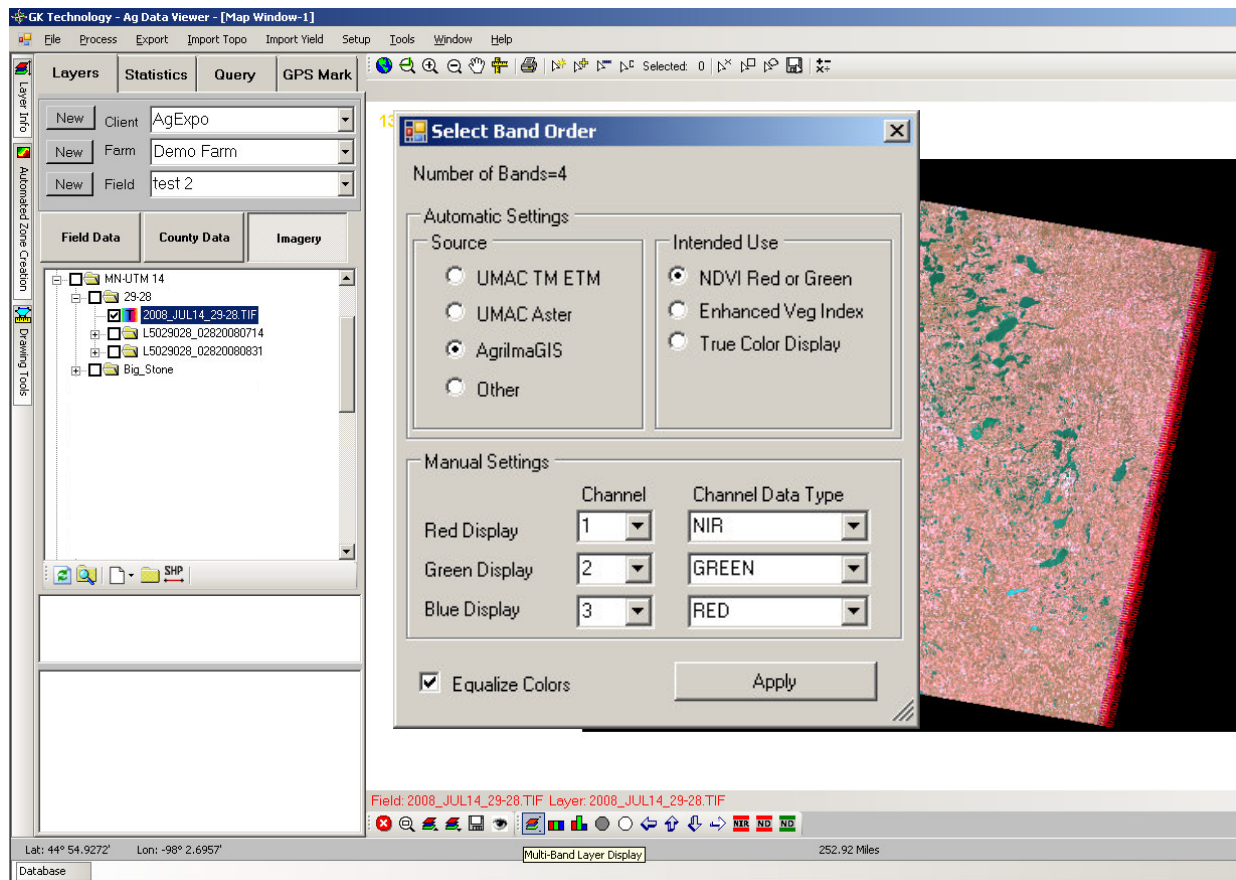


Select to the folder where you imported the image and turn on the image.

Choose the “Multi-Band Layer Display”  off the Bottom Toolbar

Adjust the “Select Band Order” settings to “AgrilmaGIS” and “NDVI Red or Green”

Click “Apply”



You now have a NEW image to use for extracting surfaces from.